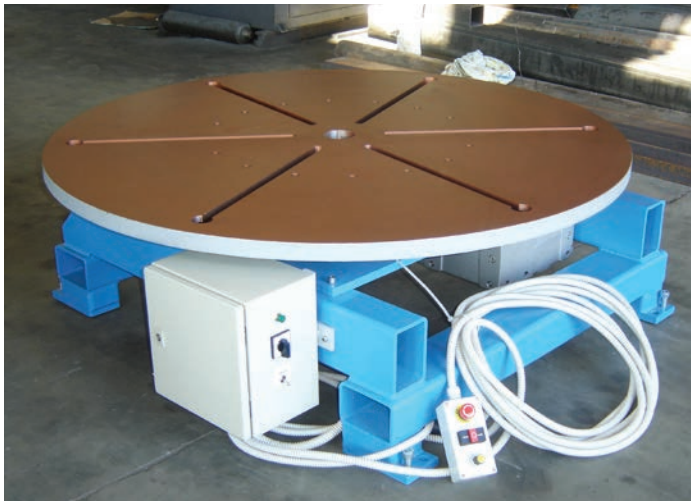


VM 100; WP 100 - 800; WP-D 1.500 - 50.000; WP-H

**AVP**

**ROTARY TABLES AND POSITIONERS**

# ROTARY TABLES AND POSITIONERS



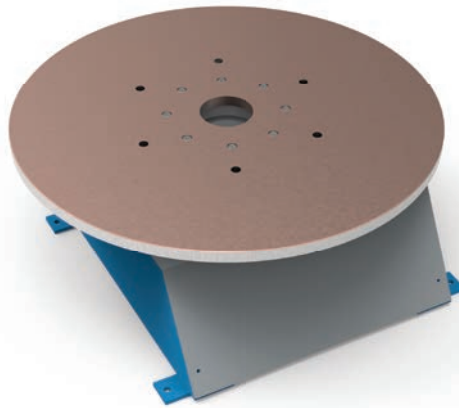
WP-H 3.000



WP-D 6.000 (3-axis)



VM 100



WP-H 400



REMOTE CONTROL

## DESCRIPTION:

AVP rotary tables VM and positioners WP are universal devices for partial or full welding automation, typically for MIG/MAG, TIG, and PLASMA welding processes. These devices simplify circular welding and help reduce production costs. The tables can be tilted (except for WP-H).

- Centered borehole in working plate,
- rotation left/right, linear speed control,
- control box, start/stop/momentary foot switch.

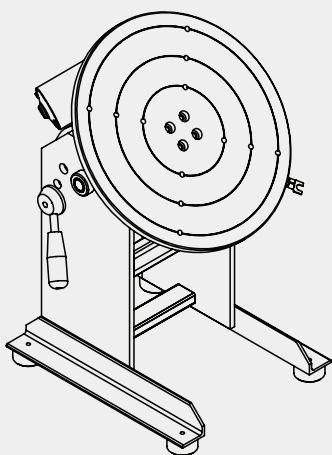
## OPTIONS:

- Complete torch mount,
- 3-jaw chuck with mounting plate,
- wired or wireless remote control,
- variable speed foot switch,
- support gantry for working height 800 mm,
- welding function 360° + overlap,
- segment welding (numerical programming),
- touch display.

## ROTARY TABLES AND POSITIONERS: TYPES

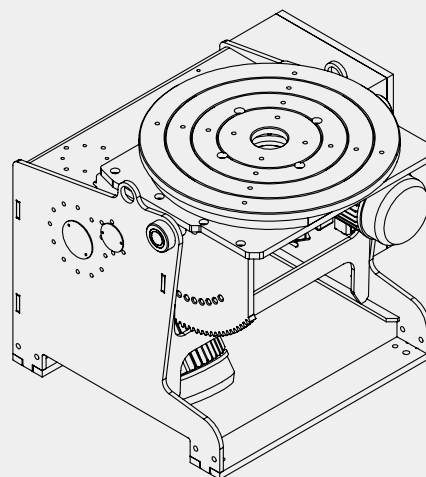
### VM 100

This is the smallest rotary welding table in our product range, designed for handling light loads of up to 100 kg. It's ideal for small workpieces and provides a cost-effective option. The rotation is motorized, while tilting is done manually.



### WP (100, 200, 400, 800)

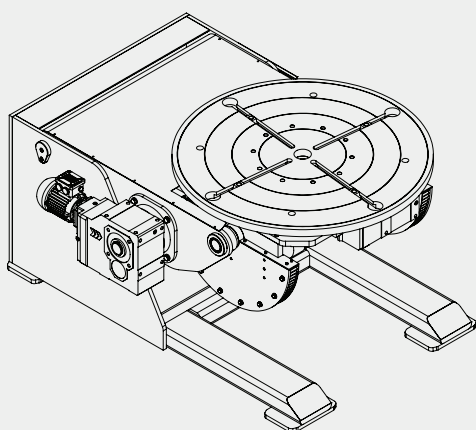
These welding positioners are suitable for medium loads ranging from 100kg to 800 kg. Their robust construction ensures reliability and durability. Rotation is motorized while tilting can be motorized or manual.



### WP (1.500 - 5.000)

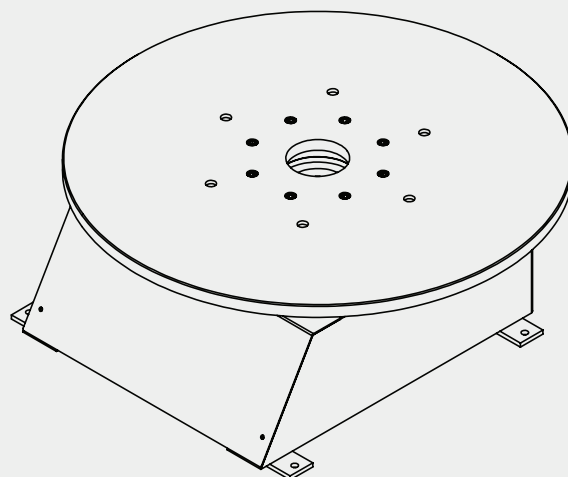
### WP-D (1.500 - 50.000)

WP positioners have 2-axes and no hydraulics. WP-D are 3-axis welding positioners designed for handling large loads. They feature motorized rotation and tilting, while the lifting axis is hydraulic. Available for loads from 1,5 to 50 tonnes.



### WP-H

WP-H is a low-profile rotator designed for workpieces that do not require tilting. Load rating per request. It features a single motor, optionally with a soft start.



## ROTARY TABLES: VM 100



VM 100



VM 100 (with torch mount)

		VM 100
Load capacity	kg	100
Work table diameter	mm	400
Bore diameter	mm	optional
Rotation speed	RPM	0,3 – 6
Tilt angle / inclination	°	0 - 90
Max. current load	A	300
Voltage rating	V	230
Frequency	Hz	50
Rotation torque	Nm	60



VM 100 (with chuck jaw)

VM 100 is the smallest rotary welding table in our product range, designed for handling light loads of **up to 100kg**. It's ideal for small workpieces and provides a cost-effective option. The rotation is motorized, while tilting is done manually.

### PROPERTIES:

- rotation left/right, linear control speed rotation,
- control box , start/stop foot switch.

### OPTIONS:

- Complete torch mount, machine torch MIG or TIG (both air or water-cooled),
- 3-jaw chuck with mounting plate,
- wired or wireless remote control,
- variable speed foot switch,
- welding function 360 ° + overlap,
- numerical programming, touch display.

## POSITIONERS: WP 100, 200, 400, 800



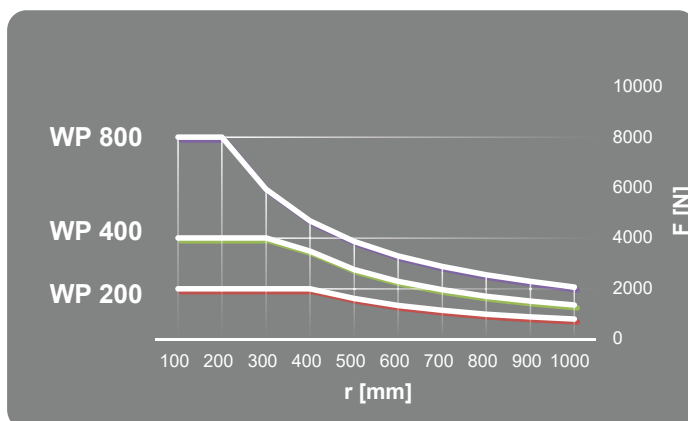
WP 400



WP 800 (with touch remote control)

		WP 100	WP 200	WP 400	WP 800
Load capacity	kg	100	200	400	800
Work table diameter	mm	500			800
Rotation speed	RPM	0,2-5	0,1-2		0,1-1,5
Power rating	kW	0,3	0,5	0,6	0,8
Tilt angle / inclination	°	105			120
Bore diameter	mm	/	/	Ø70	Ø80
Voltage rating	V/Hz	230/50			
Dimensions	mm	600x600x1000			1200x1200x900
Rotational torque	Nm	100	620		1200
Tilting torque	Nm	800		1.250	2500

\*The table must be anchored into the ground to avoid fall when tilting, leg extensions available.



WP welding positioners are suitable for medium loads ranging from 100 kg to 800 kg. Rotation and tilting are motorized (tilting can also be manual).

### PROPERTIES:

- rotation left/right, linear speed control,
- control box , start/stop foot switch..

Same options can be applied as on VM 100.

## POSITIONERS: WP & WP-D



WP 5.000 (2-axis)



WP-D 1.500 (3-axis)



WP-D 6.000 (3-axis)

**WP = 2-axis (max. 5.000 kg)**  
**WP-D = 3-axis, hydraulic lift**

WP-D 1.500 – 50.000 are 3-axis welding positioners, designed for handling heavy loads. They feature motorized rotation and tilting, while the lifting axis is hydraulic. Available versions range from 1.5 to 50 tonnes.

		<b>WP 1.500</b>	<b>WP 3.000</b>	<b>WP 5.000</b>	<b>WP 10.000</b>	<b>WP 50.000</b>
Load capacity	tonne	1,5	3,0	5,0	10,0	50,0
Tilting torque	Nm	4.500	15.000	25.000	50.000	250.000
Rotational torque		3.000	9.000	15.000	30.000	150.000
Table diameter	mm	Ø1000	Ø1200	Ø1500	Ø2000	Ø4000
Rotation speed	RPM	0-1	0-1	0-0,6	0-0,5	0-0,2
Tilt angle / inclination	°	0 - 120				

Please contact us for details.