



AVC, VIDEO SYSTEM

**AVP**



**AVC COMMAND PANEL & SERVO ACTUATOR**

**AVC (arc voltage control) is a control system that we integrate in AVP welding machines and cannot be ordered individually.** The main advantage of the AVC system is to achieve better welds by controlling the welding output information (mainly arc voltage) to change the height of the torch. With AVC control it is possible to increase the welding speed and still achieve great welds. Torch Z axis automatically adjusts with a servo motor according to the set parameters. It is most times used for TIG (GTAW) process but it is also possible to control MIG/MAG or PLASMA.

In case of a second motorized axis it is possible to use AVC and oscillation.

- Positioning of the welding torch for ideal ignition distance (touch-retract),
- positioning for the welding distance - precision length control,
- ensures the arc gap is constant and steady,
- automatic welding current detection,
- voltage sensor for the AVC arc length monitoring,
- HF security,
- servo operated actuator (slide) with 50 - 300 mm stroke and limit switches,
- additional manual slides (optional).

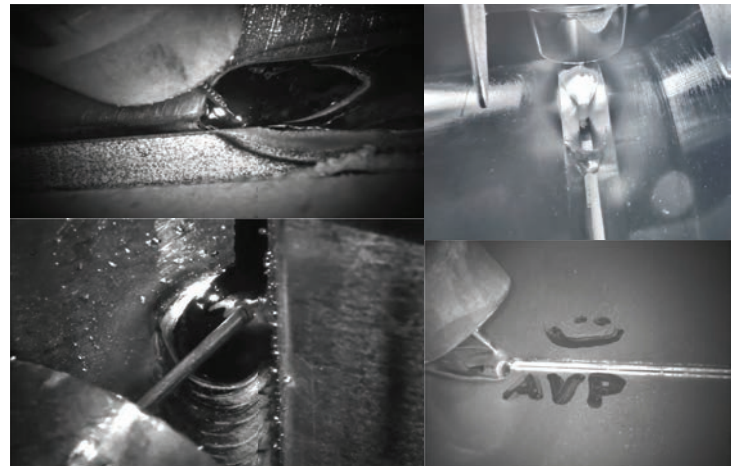
# CONTROL SYSTEMS: WELDING CAMERAS



## VIDEO SYSTEMS FOR WELDING PROCESSES



**TIG (GTAW) WELDING WITH WIRE**



**EXAMPLES**

The best way to observe welding processes is by using a welding camera. Welding cameras help us to **see weld errors** faster and enables us to safely look at the welding process without the need for protective equipment. It can be used to aid manual torch corrections while welding. Optionally, it is possible to record and save the welding process video for later examination. Welding cameras can be used for most welding processes.

- Real time welding surveillance,
- visual weld seam inspection,
- industrial rugged design,
- water or air cooling (optional, if required),
- large, bright touch screen monitor - 13" - 21",
- option of watching two welding cameras on the same monitor simultaneously,
- large range of image settings (brightness, contrast, frame-rate, RGB color control ...),
- replaceable protective camera glass,
- 3 axis mount that can easily move the camera to desired position.

We can offer the installation and training for use of multiple well known brands: Cavitar, Xiris, Fronius ArcView and Seesense.